



THE LEADING INNOVATOR
IN BARCODE SCANNING

Newland Auto-ID Tech. Co., Ltd.

Newland Europe BV.

Add: Rolweg 25, 4104 AV Culemborg, The Netherlands
Tel: +31 (0) 345 87 00 33
Fax: +31 (0) 345 87 00 39
Email: sales@newland-id.com
Tech Support: tech-support@newland-id.com
Web: www.newland-id.com

Newland North America Inc.

Add: 46559 Fremont Blvd., Fremont, CA 94538, USA
Tel: 510 490 3888
Fax: 510 490 3887
Email: info@newlandna.com
Web: www.newlandamerica.com

Newland Latin America

Tel: +1 (239) 598 0068
Fax: +1 (239) 280 1238
Email: info@newlandla.com
Web: www.newlandamerica.com

Newland Taiwan Inc.

Add: 7F-6, No. 268, Liancheng Rd., Jhonghe Dist. 235, New Taipei City, Taiwan
Tel: +886 2 7731 5388
Fax: +886 2 7731 5389
Email: info@newland-id.com.tw
Web: www.newland-id.com.tw

Newland Korea

Add: Biz. Center Best-one, Jang-eun Medical Plaza 6F, Bojeong-dong 1261-4,
Kihung-gu, Yongin-City, Kyunggi-do, South Korea
Tel: +82 10 8990 4838
Fax: +82 70 4369 0009
Email: th.sung@newland-id.com.tw
Web: www.newlandaidc.com/kor/

Newland Auto-ID Tech. Co., Ltd.

Add: No.1 Rujiang West Rd., Mawei, Fuzhou, Fujian 350001, China
Tel: +86-591-83978605
Fax: +86-591-83979216
Email: sales1@nlscan.com
Web: www.newlandaidc.com

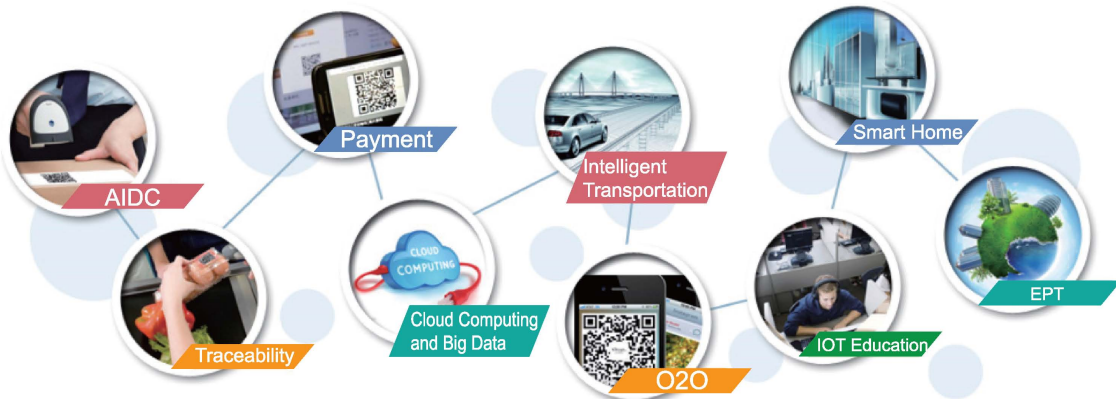


Our Strength

MEMBER OF NEWLAND GROUP >

Newland Group was founded in 1994 in Fuzhou, China. Member companies' business covers 3 main categories: Internet of Things, Digital TV, and Environmental Protection. Newland Computer, the big brother in the Newland Group family, together with it's 14 subsidiary companies including Newland Auto-ID, provides leading products and services for Payment, AIDC, Transportation, and Telecommunication etc.

As the strategy subsidiary company of Newland Computer, Newland Auto-ID enjoys strong supports from Newland Group and brother companies.



LEADING IN INDUSTRY >

Newland Auto-ID has over 18 years non-stop research in 2D barcode reading technology, it's the leading company in this field in China, as well as a well-known expert in global market.

Newland Auto-ID is the only company that has full stack 2D barcode technology in China, and the only company that make 2D decoder silicon IC in the world.

Newland Auto-ID owns more than 200 patents related to barcode product/technology:

- 5 patents in USA and 5 patents in Europe.
- 120 patents for IC and 50 patents for Engine in China.
- 22 patents in 2D barcode IOT business in China.



Overview

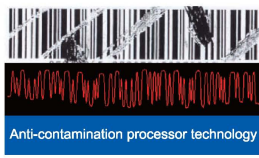
Newland Auto-ID (Newland Auto-ID Tech. Co., Ltd.) was founded in 1999 as a wholly-owned subsidiary of Newland Computer (A listed company, Stock code: 000997), we provide products and solutions specialized in Auto-ID industry. We commit ourselves to delivering the best products and services to our customers.



TECHNOLOGY >

Our advance **UIMG®** technology is the result of decade's research and development on imaging based decoding technology:

- High quality digital image capture technology
- Intelligent image processing and decoding technology
- High-performance embedded computing platform
- Embedding application development technology



High-speed motion
image capture
technology

ADVANCED FACILITIES >

We have advanced equipment for R&D and mass production, including environmental, mechanical, electrical and safety testing etc., We have professional facilities including radiation anechoic chamber, automatic scanning DOF and speed testing, optical lens testing etc.

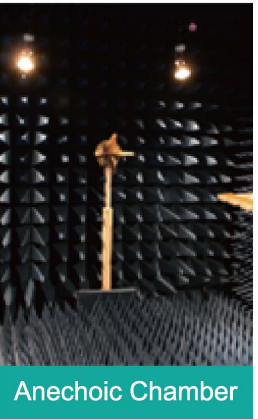
Our barcode test laboratory is the only CNAS approved certification body specified in barcode testing in China, reports generated by our laboratory would also be recognized by CNAS mutual recognition organizations amount 80 economy entities worldwide.



Robot Arm



Lens Accuracy Tester



Anechoic Chamber



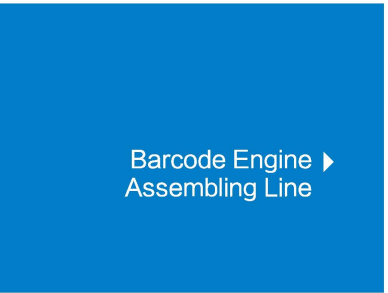
CNAS Approved Laboratory

EXCELLENT SUPPLY CHAIN MANAGEMENT >

- ISO20000, ISO9001 and ISO14000 certified
- Multiple supply channels for key components, over 95% components from authorized OEM provider or agents.
- 2000m² modernized factory, including dust-free workshop and engine assembling line and three outsourcing factories more than 10000 m²



Barcode Engine
Assembling Line



Surface
Mounting Line



Automatic
Lens Adjustment



Barcode DOF
Testing System

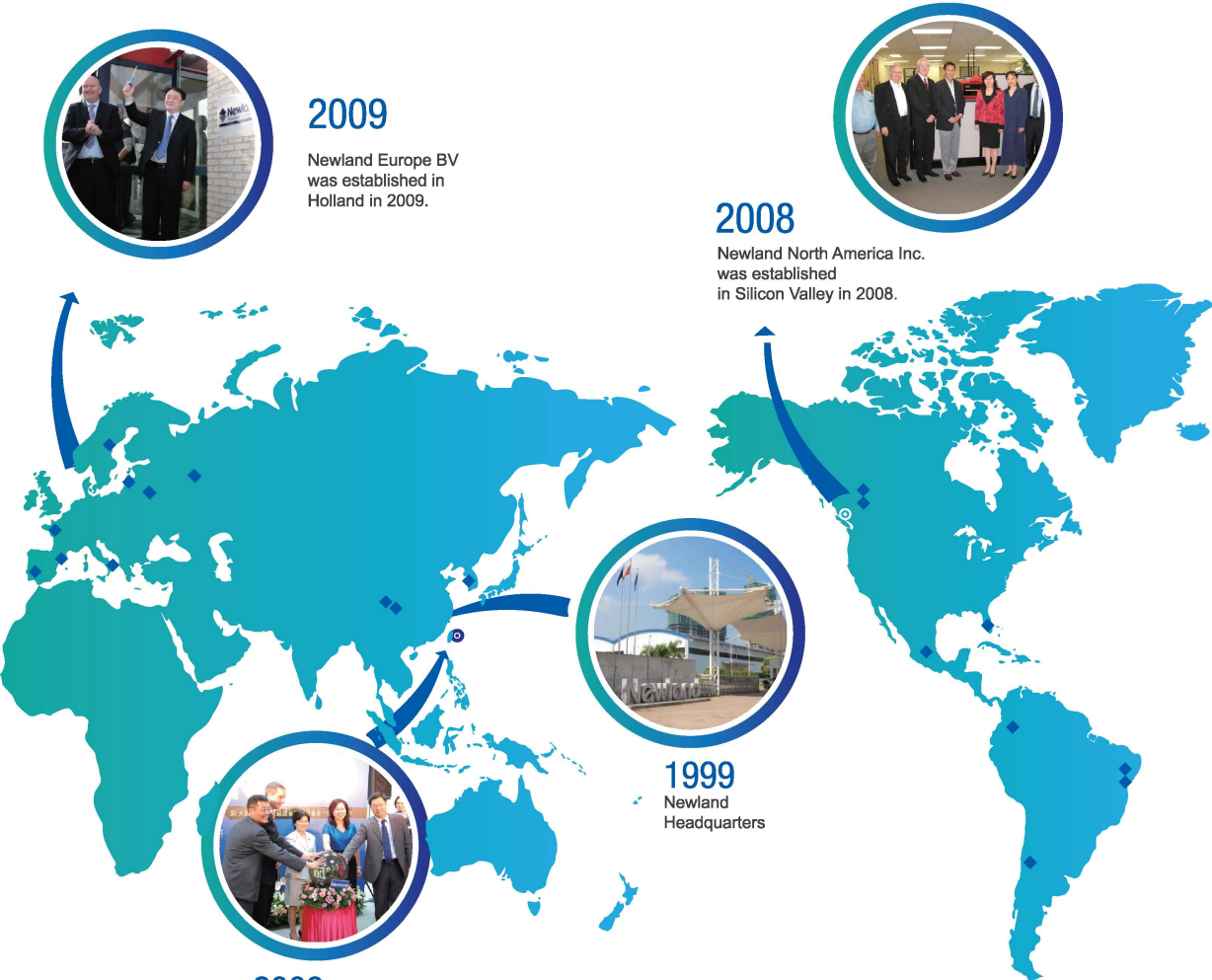


CUSTOMIZATION ABILITY >

Agile and excellent R&D team, able to accurately capture requirements, fast customizing product and developing professional solutions for customers.

Rich experiences in full cycle major project management, from requirement capture, product design, engineering, to mass production.

WORLDWIDE SALES
AND SERVICE NETWORK >



Industrial Solutions

Newland provides customers with safe, reliable and efficient solutions; Our solutions help to fully upgrade your information management system. Our products and services have a proven track record of successful application within numerous industries like medical & health care, retail & chain-store operations, FMCG, shipment & delivery, finance, government & public affairs.

Shipment & Delivery	Retail & Chain-store Operations
Medical & Health Care	Government & Public Affairs
Finance	Fast-moving Consumer Goods

OEM SCAN ENGINE >

- Wide-range product portfolio to cater for variety of application needs.
- Optimized for barcodes on LCD / Mobile and printed barcodes.
- Faster decoding speed, lower power consumption and eco-friendly.
- Advanced barcode decoding technologies, capable for special requirements / customizations and help customer to achieve the best outcome.

<div>EM1300</div> <div></div> <div><ul style="list-style-type: none">• Excellent performance on wide/long 1D barcodes.• Flexible firmware customization.• Supports ALL 1D barcodes• Supports USB / TTL-232• Size: 28.2(L)x23.4(W)x11.2(H)mm.</div>	<div>EM1365-LD</div> <div></div> <div><ul style="list-style-type: none">• Best Cost-Performance choice of 1D engine.• Supports most 1D barcodes.• Supports USB / TTL-232• Up to 300 scans per scan.• Size: 28.3(L)x22.0(W)x11.8(H)mm.</div>
<div>EM1399-LD</div> <div></div> <div><ul style="list-style-type: none">• Mount compatible to SE9xx series.• Supports most 1D barcodes.• Supports USB / TTL-232• Up to 300 scans per scan.• Size: 21.5(L)x15.3(W)x11.9(H)mm.</div>	<div>EM2028</div> <div></div> <div><ul style="list-style-type: none">• Supports ALL 1D barcodes and ALL 2D barcodes.• Flexible firmware customization.• Supports USB / RS232• Size: 30.0(L)x35.0(W)x19.0(H)mm.</div>
<div>EM2049</div> <div></div> <div><ul style="list-style-type: none">• Mount compatible design.• Supports most 1D and QR/DM/PDF 2D barcodes.• Supports USB / TTL-232• Support micro-USB interface• Size: 39.0(L)x23.6(W)x19.5(H)mm.</div>	<div>EM2096</div> <div></div> <div><ul style="list-style-type: none">• Smallest 2D imager in the range.• Best Cost-Performance choice of 2D engine.• Supports most 1D and QR/DM/PDF 2D barcodes.• Flexible integration with decoder board.• Imager Size: 21.0(L)x9.2(W)x8.0(H)mm.</div>

<div>EM3000</div> <div></div> <div><ul style="list-style-type: none">• Supports ALL 1D barcodes and ALL 2D barcodes.• Flexible firmware customization.• All-in-one design.• Supports TTL232• Size: 28.0(L)x24.5(W)x13.5(H)mm.</div>	<div>EM3090</div> <div></div> <div><ul style="list-style-type: none">• Supports most 1D and QR/DM/PDF 2D barcodes.• All-in-one design.• Supports USB / TTL-232• Size: 28.0(L)x24.5(W)x13.9(H)mm.</div>
<div>EM3096</div> <div></div> <div><ul style="list-style-type: none">• Mount compatible to SE9xx series.• Supports most 1D and QR/DM/PDF 2D barcodes.• Compact all-in-one design.• Supports TTL-232(Default) /USB• Size: 21.7(L)x14.6(W)x11.5(H)mm.</div>	<div>EM3296</div> <div></div> <div><ul style="list-style-type: none">• Mount compatible to SE9xx series.• Best Cost-Performance choice of 2D engine.• Compact all-in-one design.• Supports most 1D and QR/DM/PDF 2D barcodes.• Size: 21.2(L)x14.0(W)x11.1(H)mm.</div>
<div>EM3396</div> <div></div> <div><ul style="list-style-type: none">• Mount compatible to SE9xx series.• Highly visible laser aimer.• Compact all-in-one design.• Supports most 1D and QR/DM/PDF 2D barcodes.• Size: 21.7(L)x14.6(W)x11.5(H)mm.ts.</div>	<div>EM20</div> <div></div> <div><ul style="list-style-type: none">• Optimized for barcodes on LCD/ Mobile.• Supports ALL 1D barcodes and ALL 2D barcodes.• Supports TTL-232 /USB• Size: 30.0(L)x35.0(W)x19.0(H)mm.</div>

HANDHELD SCANNER >

- Optimized for barcodes on LCD / Mobile and printed barcodes.
- Available in corded and cordless versions, Supports multiple interfaces, Plug-and-Play.
- Advanced barcode decoding technologies, Quick response and support customizations (upon request).
- Innovative product with Newland AIDC adoption and cost effective solution.

HR12



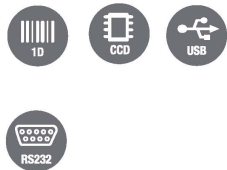
- Best cost-performance choice.
- Supports most 1D barcodes.
- Size: 163.0x68.4x158.5mm, 130g
- Up to 300 scans per second.
- Resolution ≥ 4mil

HR11 / HR11+ Upcoming



- HR11 supports most 1D barcodes.
- HR11+ supports ALL 1D barcodes.
- Size: 145.0x101.0x68.0mm, 110g
- IP42 and 1.2m drop resistance.
- Supports USB, RS232, PS/2

HR100



- Supports ALL 1D barcodes.
- Size: 156.0x95.0x71.0mm, 105g
- 1.5m drop resistance.
- Up to 300 scans per second.
- Supports USB, RS232, PS/2

HR15



- Supports ALL 1D barcodes.
- Size: 113.5x73.0x159.0mm, 152g
- IP54 and 1.5m drop resistance.
- Up to 300 scans per second.
- Supports USB, RS232, PS/2

HR22



- Best cost-performance choice.
- Supports most 1D and QR/DM/PDF 2D barcodes.
- IP42 and 1.2m drop resistance.
- Size: 145.0x101.0x68.0mm, 165g
- Supports USB, RS232, PS/2

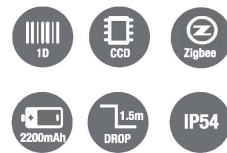
HR32



- Supports ALL 1D barcodes and ALL 2D barcodes.
- IP54 and 1.2m drop resistance.
- Powerful Data Editing Capability.
- Size: 113.5x73.0x159.0mm, 160g
- Supports USB, RS232, PS/2

Cordless Handheld Scanner

HR15-CE



- Supports ALL 1D barcodes.
- IP54 and 1.5m drop resistance.
- Zigbee, up to 50m distance.
- Up to 60,000 scans per full charge.
- Size: 113.5x73.0x159.0mm, 210g (with battery)
- Cradle: 195x82.5x47mm, 150g

HR32-CS



- Supports ALL 1D barcodes and ALL 2D barcodes.
- IP54 and 1.2m drop resistance.
- Zigbee, up to 50m distance.
- Up to 15,000 scans per full charge.
- Size: 113.5x73.0x159.0mm, 252g (with battery)
- Cradle: 195x82.5x47mm, 150g

Fixed Mount Scanner >

- Wide-range product portfolio to cater for variety of application needs.
- Optimized for barcodes on LCD / Mobile and printed barcodes.
- Ease of Integration with plug-and-play
- Compact size allows to mount in space limited applications

<div>FM100</div> <div></div> <div><ul style="list-style-type: none">• Supports ALL 1D barcodes.• Compact size and easy integration.• IP54 dust and water resistant.• Supports USB / RS232• Size: 37.0(L)x49.0(W)x26.0(H)mm.</div>	<div>FM420</div> <div></div> <div><ul style="list-style-type: none">• Supports ALL 1D barcodes and ALL 2D barcodes.• Compact size and easy integration.• IP54 dust and water resistant.• Supports USB / RS232• Size: 37.0(L)x49.0(W)x25.0(H)mm.</div>
<div>FM30 Series</div> <div></div> <div><ul style="list-style-type: none">• Optimized for barcodes on LCD/ Mobile.• Supports most 1D and QR/DM/PDF 2D barcodes.• Supports IR triggering operation.• Supports USB / RS232• Size: 78.2(L)x67.2(W)x52.3(H)mm.</div>	<div>FM50</div> <div></div> <div><ul style="list-style-type: none">• Supports ALL 1D barcodes and ALL 2D barcodes.• Supports IR / light triggering operation.• IP54 and 1.5m drop resistance.• Supports USB / RS232• Size: 76.0(L)x51.0(W)x28.0(H)mm.</div>

Desktop Scanner >

- Excellent motion tolerance and IR trigger
- Excellent 1D/2D reading Performance
- Fully compatible with on-paper barcode and on-screen barcode

<div>FR20</div> <div></div> <div><ul style="list-style-type: none">• Optimized for barcodes on LCD/ Mobile.• Supports most 1D and QR/DM/PDF 2D barcodes.• Scan window: 52x69mm• Supports USB / RS232• Size: 127.3(L)x111.5(W)x94.0(H)mm.</div>	<div>FR40</div> <div></div> <div><ul style="list-style-type: none">• Optimized for barcodes on LCD/ Mobile.• Supports most 1D and QR/DM/PDF 2D barcodes.• Supports both handheld and hand-free mode.• One-touch switch mode (LCD or Printed Barcode)• Supports USB, RS232, PS/2• Size: 83.0(L)x81.0(W)x148.0(H)mm.</div>
--	--

Portable & Mobile

- Superior barcode reading performance.
- Wireless communication - BT, WiFi, 3G, 4G.
- Software Development Kit and application supports.

PT30 Lite



189.5(L)×76.0(W)×45.0(H) mm
382g (With Battery)

- Supports 1D and 2D barcodes.
- 2.83" QVGA TFT Resistive Touch screen.
- Marvell XScale PXA310, 806MHz CPU.
- 256MB RAM, 128MB ROM, extra 4G flash memory.
- OS: WinCE 6.0.
- IP54 and 1.2m drop resistance.



MT65-XW



166.0(L)×73.0(W)×26.0(H) mm
330g (With battery)

- Supports 1D and 2D barcodes.
- 4 inch WVGA (800x480) Capacitive touch screen.
- OS: Android 5.1.
- Supports Bluetooth / WiFi / WWAN / HF RFID / Camera.
- Wireless wide area network (WWAN): 2G / 3G / 4G.
- Optional: Single-line laser engine.



BS80



88.0(L)×46.0(W)×24.5(H) mm
62 g (Pocket Scanner).

- 2 models available: 1D or 2D engine.
- Depth of field: 50 - 400 mm.
- Supports iOS / Android / Windows.
- Via Bluetooth 4.0 BLE connection.



Customer Information Terminal

- Support 1D barcodes, 2D barcodes and RFID tags.
- Fit into different applications, e.g. price checker, access control terminal or digital signage.
- Compact size and VESA mount 75x75, suitable for stores or offices.
- Supports an external handheld scanner for bulky objects and GPIO ports for controlling entry/exit gates.

NQuire300 Upcoming



140(H) × 140(W) x 60(D)mm
440g

- Supports 1D / 2D barcodes and RFID tags reading.
- Display: 4.3" 480*272 capacitive touch screen.
- OS: Android 4.4.2.
- Supports Ethernet / WiFi / USB / GPIO / Bluetooth4.0.
- Dual-channel stereo Speaker.
- Supports Power-over-Ethernet (PoE).



NQuire1000 Upcoming For Global Releases



252(H) × 178(W) x 24(D)mm
594g

- Supports 1D and 2D barcodes.
- Display: 10.1" WXGA, 1280*800 TFT LCD.
- 5 points Capacitive Touch Screen.
- OS: Android 5.1.
- Supports WiFi / Bluetooth / LAN / GPS.



* For further information about Newland products, please contact your local Newland sales or Newland agents.